

## **Attachment C2**

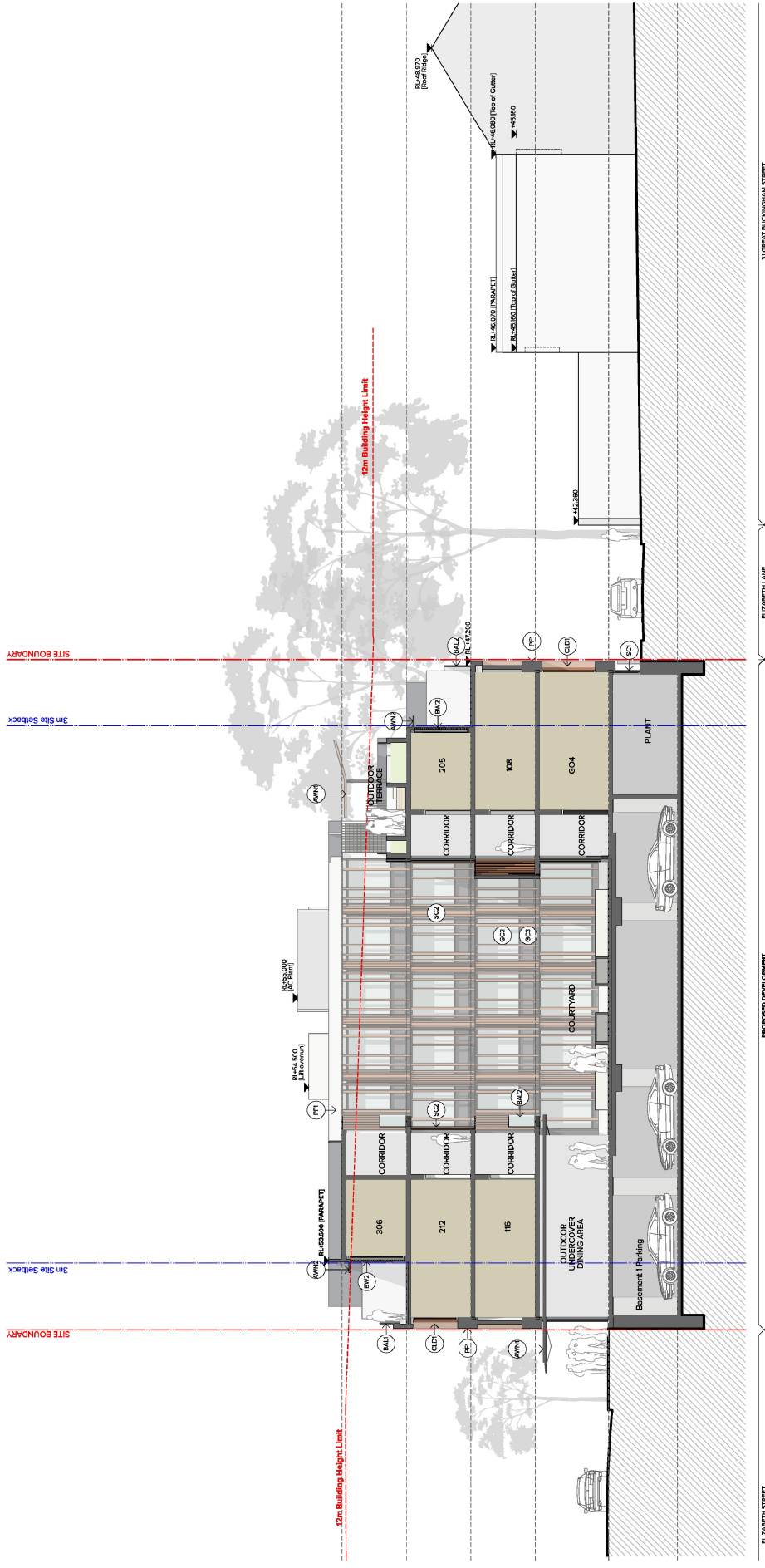
**Original submitted architectural drawings  
(superseded)**











Roof Level RL 45.000	2,900
Level 03 RL 44.500	2,900
Level 02 RL 44.250	2,900
Level 01 RL 44.250	3,300
Ground Level RL 44.250	3,100
Basement 01 RL 43.500	

- Legend**
- (BA) Clear Glass Balustrade fixed to concrete upturn slab
  - (BW) Brickwork stretcher bond, loosed joint, 'Bovral Blue' Mix
  - (CG) Clear Glass Balustrade fixed to top of concrete slab
  - (BR) Brickwork in Pattern, loosed joint, 'Bovral Blue' Mix
  - (CD) Metal Cladding System with high concealed precasted panels, including edge and reveals, Copper Finish
  - (GC) Glass, Clear, Aluminium framing system (P2) and Energy Assessment for performance requirements.
  - (G2) Glass, Clear, Aluminium framing system, colour and finish to match P2. Refer to Energy Assessment for performance requirements.
  - (G3) Glass, Schedule 4, Aluminium framing system, colour and finish to match P2. Refer to Energy Assessment for performance requirements.
  - (GR) Brickwork stretcher bond, loosed joint, 'Bovral Blue' Mix
  - (IR) Brickwork in Pattern, loosed joint, 'Bovral Blue' Mix
  - (PA) Paint finish, colour to match Dulux 'Natural White'
  - (PB) Paint finish, colour to match Dulux 'Bavaria'
  - (SC) Vertical Aluminium Blatton System, Colour to match P2
  - (SD) Vertical Screen System, Colour to match CDD1

ST GREAT BUCKINGHAM STREET

ELIZABETH LANE

PROPOSED DEVELOPMENT

ELIZABETH LANE

ST GREAT BUCKINGHAM STREET

**NOTES**

1. ALL WORK TO BE ACCORDING TO THE NATIONAL BUILDING REGULATIONS 2011 AND THE NATIONAL FIRE BRANCH REGULATIONS 2011.

2. ALL WORK TO BE ACCORDING TO THE NATIONAL BUILDING REGULATIONS 2011 AND THE NATIONAL FIRE BRANCH REGULATIONS 2011.

3. ALL WORK TO BE ACCORDING TO THE NATIONAL BUILDING REGULATIONS 2011 AND THE NATIONAL FIRE BRANCH REGULATIONS 2011.

4. ALL WORK TO BE ACCORDING TO THE NATIONAL BUILDING REGULATIONS 2011 AND THE NATIONAL FIRE BRANCH REGULATIONS 2011.

5. ALL WORK TO BE ACCORDING TO THE NATIONAL BUILDING REGULATIONS 2011 AND THE NATIONAL FIRE BRANCH REGULATIONS 2011.

**CLIENT**  
 Zhongde Real Estate Pty Ltd AIF Zhongde Unit Trust  
 Suite 102/27-28 Bahurst Street  
 STONEY NSW 2200

**Project Title**  
 Redfern Hotel  
 385-391 Elizabeth Street REDFERN NSW 2016

**Project No**  
 DA-350-001

**Drawn By**  
 J. L. L. L.

**Checked By**  
 J. L. L. L.

**Scale**  
 1:100

**Date**  
 14/11/2023

**TURNER**

Level 10, 100 Market Street  
 Sydney NSW 2000  
 Phone: (02) 9232 4000  
 Fax: (02) 9232 4001  
 Email: info@turner.com.au  
 Website: www.turner.com.au

